

INSTALLATION MANUAL

11619

Level of Difficulty

Easy

Installation difficulty levels are based on time and effort involved and may vary depending on the installer level of expertise, condition of the vehicle and proper tools and equipment.

Weight Carrying Capacity

Gross trailer weight (GTW)	2,000 lbs.
Tongue weight (TW)	200 lbs.

Parts List

Item	Qty	Description
1	4	Square-hole spacer, 1/4" x 1" x 3"
2	4	Carriage bolt, 1/2"-13 x 1-1/2", grade 8
3	4	Hex nut, 1/2"-13
4	4	Conical-toothed washer, 1/2"

Tools Required

Ratchet	Socket, 3/4"
Socket extension, 6"	Socket, 10mm
Torque wrench	Socket, 12mm
Fishwire, 1/2" (includes four)	Flathead screwdriver

* For a tools reference guide visit curtmfg.com/trailer-hitch-installation

⚠ WARNING

Never exceed the vehicle manufacturer's recommended towing capacity.

Product Photo



NOTICE

Visit www.curtmfg.com for a full-color copy of this instruction manual, as well as helpful videos, guides and much more!

Before you begin installation, read all instructions thoroughly.

Proper tools will improve the quality of installation and reduce the time required.

This installation requires:

- Part removal
- Fishwiring to install hardware

Periodic inspection of the trailer hitch should be performed to ensure all mounting hardware remains tight and structural components are secure.

To help prevent damage to the product or vehicle, refer to the specified torque specifications when securing hardware during the installation process.

SAFETY INSTRUCTIONS

Safety glasses should be worn at all times while installing this product.

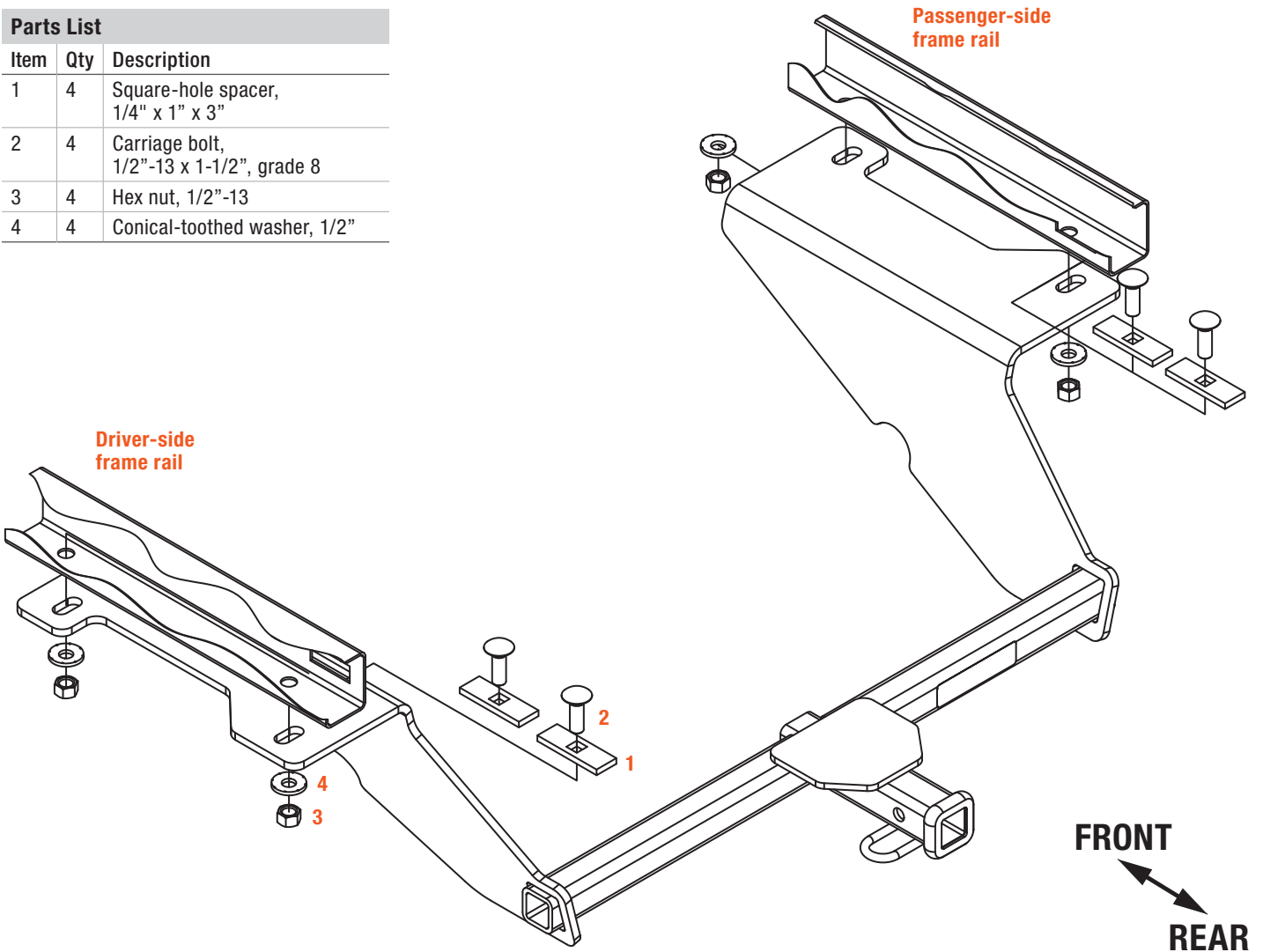
Product Registration and Warranty

CURT stands behind our products with industry-leading warranties. To get copies of the product warranties, register your purchase or provide feedback, visit: warranty.curtgroup.com/surveys

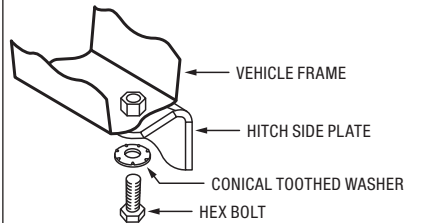
ASSEMBLY

Parts List

Item	Qty	Description
1	4	Square-hole spacer, 1/4" x 1" x 3"
2	4	Carriage bolt, 1/2"-13 x 1-1/2", grade 8
3	4	Hex nut, 1/2"-13
4	4	Conical-toothed washer, 1/2"

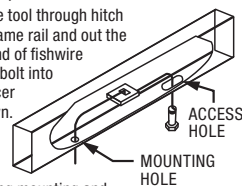


CONICAL TOOTHED WASHER ORIENTATION



FISHWIRE TECHNIQUE

Insert coiled end of fishwire tool through hitch mounting hole in vehicle frame rail and out the access hole. Pass coiled end of fishwire through spacer and thread bolt into coil. Kink wire to keep spacer separate from bolt as shown. Pull fishwire, spacer and bolt through frame and out mounting hole. Use fishwire to guide hitch during mounting and prevent loss of bolt or spacer inside frame rail.



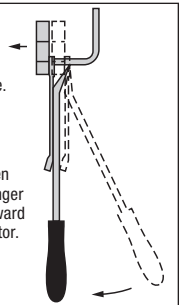
RUBBER ISOLATOR REMOVAL DIAGRAM

This technique can be used if exhaust hanger removal pliers are not available.

Using a 5/8" open end wrench, slide the wrench up to the rubber isolator, cradling the hanger rod as shown.

Place the flat edge of a pry bar between the wrench and the hanger stop or hanger rod. Then simply rotate the pry bar toward the wrench to remove the rubber isolator.

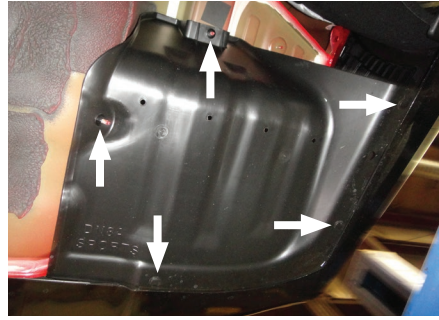
Note: Using a lubricant or soapy water on the hanger rod and the rubber isolator helps removal.



Step 1

On the driver-side, using a 10mm socket, remove two flange nuts securing the trim panel. Use a flathead screwdriver to remove three pop rivets.

Remove the trim panel and return it to owner with hardware.



Step 2

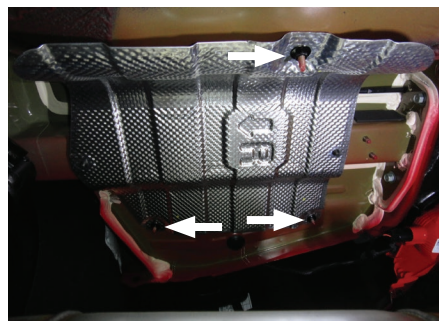
Remove the exhaust hangers. On the passenger side, remove the two 12mm flange nuts using a 12mm socket to allow exhaust to be lowered.

Note: Be sure to support the exhaust before removing the flange nuts.



Step 3

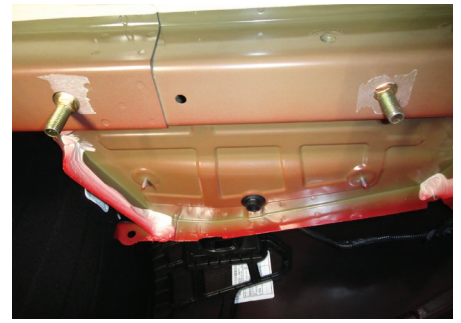
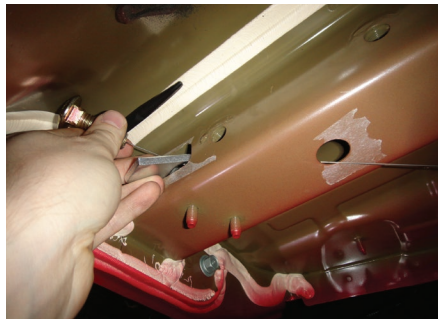
On the passenger side, using a 10mm socket, remove three 10mm flange nuts from the heat shield. Carefully pull on the heat shield to remove it and return it and the hardware to the owner.



Step 4

On the driver side, using the provided fishwire, insert the square-hole spacers (#1) and carriage bolts (#2) into the frame through the access hole in the frame rail. Be sure to leave the fishwire attached to the hardware.

Repeat on the passenger side of the vehicle.



Step 5

Raise the trailer hitch into position so the holes on the hitch are aligned with holes on the frame rails on both sides of the vehicle.

Remove the fishwire from the carriage bolts. Install conical-toothed washers (#4) and hex nuts (#3) onto the carriage bolts (#1) bolts.

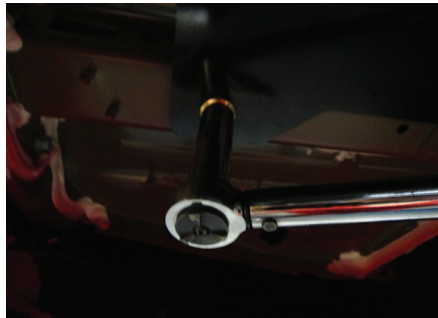
Note: The tooth side of washer should face toward the trailer hitch.



Step 6

Torque all 1/2" hardware to 110 ft-lbs using a torque wrench.

Raise the exhaust back into position. Be sure to reinstall the flange nuts and rubber isolators that were removed in Step 2.



Final Installed Image



TOWING BASICS & SAFETY INFORMATION

For information on safely towing your trailer, visit curtmfg.com/understanding-towing.